

Math 3B: Lecture 3

Noah White

October 4, 2017

AAP tutoring

- AAP Peer Learning Facilitators available for Math 3B.

AAP tutoring

- AAP Peer Learning Facilitators available for Math 3B.
- Sign-ups start Wednesday (10/4/17) and the first session begins the following week.

AAP tutoring

- AAP Peer Learning Facilitators available for Math 3B.
- Sign-ups start Wednesday (10/4/17) and the first session begins the following week.
- If you are not a part of AAP, applications for this program are found in Campbell Hall!

Last time

Last time, we spoke about

- Graphing using calculus

Last time

Last time, we spoke about

- Graphing using calculus
- Horizontal asymptotes

Last time

Last time, we spoke about

- Graphing using calculus
- Horizontal asymptotes
- Vertical asymptotes

Last time

Last time, we spoke about

- Graphing using calculus
- Horizontal asymptotes
- Vertical asymptotes
- Role of the first/second derivative

Last time

Last time, we spoke about

- Graphing using calculus
- Horizontal asymptotes
- Vertical asymptotes
- Role of the first/second derivative

Last time

Last time, we spoke about

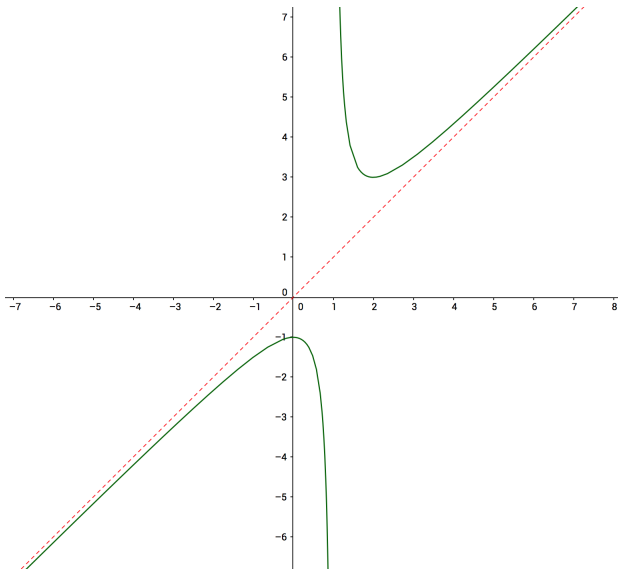
- Graphing using calculus
- Horizontal asymptotes
- Vertical asymptotes
- Role of the first/second derivative

Note: Problem set 2 and homework will be posted today.

Example time

... On the board.

Slanted asymptotes



Slanted asymptotes

- An asymptote is a straight line which the function approaches as $x \rightarrow \pm\infty$

Slanted asymptotes

- An asymptote is a straight line which the function approaches as $x \rightarrow \pm\infty$
- If a function has a slanted asymptote its gradient must approach a constant

Slanted asymptotes

- An asymptote is a straight line which the function approaches as $x \rightarrow \pm\infty$
- If a function has a slanted asymptote its gradient must approach a constant
- So we should find

$$\lim_{x \rightarrow \pm\infty} f'(x) = m$$

Slanted asymptotes

- An asymptote is a straight line which the function approaches as $x \rightarrow \pm\infty$
- If a function has a slanted asymptote its gradient must approach a constant
- So we should find

$$\lim_{x \rightarrow \pm\infty} f'(x) = m$$

- We then know the function has a slanted asymptote $y = mx + b$.

Slanted asymptotes

- An asymptote is a straight line which the function approaches as $x \rightarrow \pm\infty$
- If a function has a slanted asymptote its gradient must approach a constant
- So we should find

$$\lim_{x \rightarrow \pm\infty} f'(x) = m$$

- We then know the function has a slanted asymptote $y = mx + b$.
- To find b :

$$b = \lim_{x \rightarrow \pm\infty} (f(x) - mx)$$

Example time

... On the board.