

An Adaptive IHS Pan-sharpening Method

Sheida Rahmani, Melissa Strait, Daria Merkurjev, Michael Moeller, Todd Wittman

Abstract— The goal of pan-sharpening is to fuse a low spatial resolution multispectral image with a higher resolution panchromatic image to obtain an image with high spectral and spatial resolution. The Intensity-Hue-Saturation (IHS) method is a popular pan-sharpening method used for its efficiency and high spatial resolution. However, the final image produced experiences spectral distortion. In this paper, we introduce two new modifications to improve the spectral quality of the image. First, we propose image adaptive coefficients for IHS to obtain more accurate spectral resolution. Second, we propose an edge adaptive IHS method which enforces spectral fidelity away from the edges. Experimental results show that these two modifications improve spectral resolution compared to the original IHS and we propose an adaptive IHS that incorporates these two techniques. The adaptive IHS method produces images with higher spectral resolution while maintaining the high-quality spatial resolution of the original IHS.

Index Terms — Multispectral image, pan-sharpening, performance evaluations, image fusion, intensity-hue-saturation (IHS) transformation.

I. INTRODUCTION

MANY satellites provide two types of images: high resolution panchromatic and low resolution multispectral. The multispectral image lacks high spatial quality and the panchromatic image has low spectral quality. Due to these restrictions, many pan-sharpening methods have been created to fuse the two images together to obtain an image with high spectral and high spatial resolutions. A few popular pan-sharpening methods are: IHS [1], PCA-based image fusion [2], Wavelet-based image fusion [3], Brovey [4] and P+XS [5]. Each method experiences a trade-off between spectral and spatial quality. Researchers have created variants of these methods to improve their spectral and spatial quality. In this paper, we propose new adaptations to the IHS method.

IHS based methods are often used due to their simple computation, high spatial resolution and efficiency. The fused image results in high spatial resolution and low spectral resolution. Many modifications have been proposed to enhance its spectral quality.

The IHS fusion technique converts a color image from RGB space to the IHS color space. Here the I (intensity) band is replaced by the panchromatic image. The intensity band I is calculated using:

$$I = \sum_{i=1}^N \alpha_i M_i$$

where M_i are the multispectral bands, and the standard value for α in an RGB image is $\alpha_i=1/3$. However, most multispectral images consist of four bands, RGB and an infrared band. To address this issue, researchers have extended this method for other multispectral images by using $\alpha_i=1/N$ where N is the number of bands [6-7]. For the IKONOS satellite, the coefficients α were experimentally determined [8].

Before fusing the two images, first we upsample the multispectral image by a factor of four and we normalize each band of the image to the range [0,1]. After completing the initial steps, we do a histogram matching of the panchromatic image P to ensure that the mean and standard deviation of the panchromatic image and multispectral image are within the same range using

$$P = \frac{\sigma_I}{\sigma_P} (P - \mu_P) + \mu_I$$

where σ and μ are the standard deviation and mean, respectively. Finally, the fused multi-channel image F is formed by:

$$F_i = M_i + (P - I)$$

The final fused IHS image usually has high spatial but low spectral resolution. We propose an image adaptive IHS method that produces high spectral resolution by finding image adaptive α coefficient. We also propose a method that extracts the edges of the panchromatic image and combines it with the multispectral image to increase the spectral quality. Finally, we propose an adaptive IHS that incorporates these techniques together to improve the quality of the fused image.

II. MODIFICATIONS TO IHS

A. Image Adaptive Coefficients

In order to minimize spectral distortion in the IHS pan-sharpened image, we propose a new modification of the IHS that varies the manner the intensity band is calculated depending on the initial multispectral and panchromatic images. To minimize spectral distortion the intensity band should approximate the panchromatic image as closely as

possible. Therefore in this adaptive IHS method we want to determine the coefficients α that best approximate

$$P \approx \sum_{i=1}^N \alpha_i M_i.$$

In order to calculate these coefficients we create the following function G to minimize with respect to the α

$$\min_{\alpha} G(\alpha) = \sum_x \left(\sum_i (\alpha_i M_i(x) - P(x))^2 + \gamma \sum_i (\max(0, -\alpha_i))^2 \right).$$

The first term ensures that the coefficients yield a linear combination that approximates the panchromatic image. Physically we do not want negative α , therefore we add the non-negativity constraint on the α using the Lagrange multiplier γ . In order to solve this minimization problem we use a gradient descent method. Calculating the derivative with respect to α gives:

$$\frac{d}{d\alpha_n} G(\vec{\alpha}) = 2 \sum_x \left(\sum_{i=1}^N \alpha_i M_i(x) - P(x) \right) M_n(x) - 2\gamma \max(0, -\alpha_n).$$

We discretize the PDE to obtain a semi-implicit scheme.

$$\frac{\alpha_n^{t+1} - \alpha_n^t}{\tau} = -2 \sum_x \left(\sum_{i=1}^N \alpha_i^{t+1} M_i(x) - P(x) \right) M_n(x) + 2\gamma \max(0, -\alpha_n^t).$$

Solving for α_n^{t+1} gives:

$$\begin{aligned} \alpha_n^{t+1} + 2\tau \sum_{i=1}^N \left[\left(\sum_x (M_i(x) M_n(x)) \right) \alpha_i^{t+1} \right] \\ = \alpha_n^t + 2\tau \sum_x (P(x) M_n(x)) + 2\tau \gamma \max(0, -\alpha_n^t). \end{aligned}$$

This equation can be solved quickly by linear algebra methods. Calculating the coefficients in this manner increases the spectral quality of the images because it generates coefficients according to the original data, and maintains the good spatial quality of the IHS method.

B. Edge Adaptive IHS

In this method, we want to transfer the edges from the panchromatic image to the fused image. This approach extracts the edges from the panchromatic image, and where there are edges we impose the IHS method and on the locations where there are no edges we simply put the multispectral image. The fused multi-channel image F is formed by the new formula:

$$F_i = M_i + h(x)(P - I)$$

where $h(x)$ is an edge detecting function. We want $h(x)$ to equal 1 on edges and equal to zero off edges. The extracted edge can be obtained using standard edge detection methods such as the Canny detector [9]. We found experimentally that the best results were produced by the edge

detector suggested by Perona and Malik [10]. The edges of the panchromatic image are extracted using an exponential edge detector

$$h(x) = \exp\left(-\frac{\lambda}{|\nabla P|^4 + \epsilon}\right)$$

where ∇P is the gradient of the panchromatic image, λ is a parameter indicating how large the gradient should be in order to be an edge and controls the smoothness of the image, and ϵ is a small value that enforces a nonzero denominator [11].

The values that proved successful are $\lambda = 10^{-9}$ and $\epsilon = 10^{-10}$. Using these values and combining the edge detection with the original IHS increases the spectral resolution significantly.

C. Adaptive IHS

Due to the high performance of the edge adaptive method and image adaptive coefficient method, we also present a method that combines these two techniques. The integration of these two techniques with IHS we call adaptive IHS. This method preserves the high spatial quality and increases the spectral quality. In this method, the α_i 's are computed to create the I band, and the edge detection formula $h(x)$ is inserted as well to compute the final fused image. We compare the performance of these three methods in the following section.

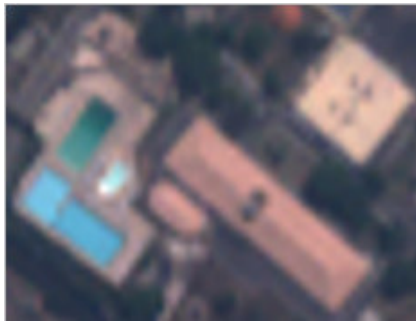
III. RESULTS

Four-band multispectral QuickBird and LANDSAT data was used for our experiments. The algorithms were implemented in Matlab. The software and documentation is available online at:

www.math.ucla.edu/~wittman/pansharpener

The original IHS, edge adaptive, image adaptive, stationary Wavelet, PCA, and adaptive IHS methods are being compared for their spectral and spatial quality. Spatial quality can be judged visually, but subtle color changes are more difficult to notice in this manner. Therefore, we consult performance metrics in order to evaluate the spectral quality. Since high resolution ground truth was not available, we compared the fusion results against an upsampled version of the original data.

We use several different metrics to help us analyze our results. Spectral Angle Mapper (SAM) calculates the average change in angle of all spectral vectors [12]. Spectral Information Divergence (SID) views each pixel spectrum as a random variable and then measures the discrepancy of probabilistic behaviors between spectra [13]. A Universal Image Quality Index (Q-average) models any distortion as a combination of three different factors: loss of correlation, luminance distortion, and contrast distortion [14-15]. The relative average spectral error (RASE) characterizes the



Original Multispectral Image



IHS Fused Image



Adaptive IHS Fused Image

Fig. 1: Pan-sharpening a suburban QuickBird scene. Copyright DigitalGlobe, NextView license, 2003.



Original Multispectral Image



IHS Fused Image

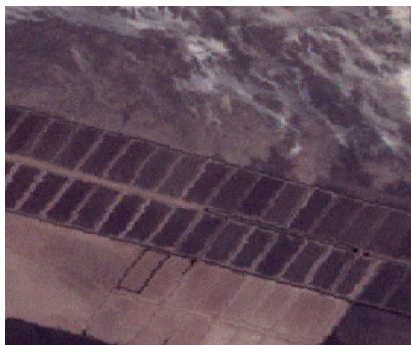


Adaptive IHS Fused Image

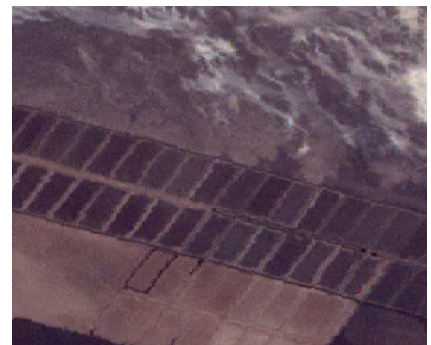
Fig. 2: Pan-sharpening an urban QuickBird scene. Copyright DigitalGlobe, NextView license, 2003.



Original Multispectral Image

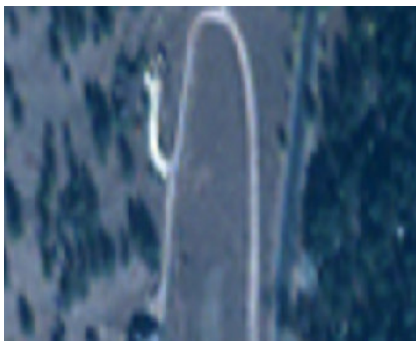


IHS Fused Image



Adaptive IHS Fused Image

Fig. 3: Pan-sharpening a rural LANDSAT-7 scene in Sioux Falls, SD. Source: USGS, www.americaview.org



Original Multispectral Image



IHS Fused Image



Adaptive IHS Fused Image

Fig. 4: Pan-sharpening a forest QuickBird scene. Copyright DigitalGlobe, NextView license, 2003.

Table 1: Spectral quality metrics for Fig. 1.

	CC	ERGAS	Qave	RASE	RMSE	SAM	SID
Reference Values	0	0	1	0	0	0	0
Original IHS	0.0509	3.1528	0.9439	12.4210	0.0544	1.1878	0.0139
Edge Adaptive IHS	0.0373	2.8496	0.9549	11.2628	0.0493	0.9505	0.0132
Image Adaptive IHS	0.0085	2.3444	0.9705	9.2362	0.0405	0.7043	0.0026
Adaptive IHS	0.0104	2.2425	0.9731	8.8277	0.0387	0.6050	0.0021
PCA	0.2673	4.5562	0.8636	17.6634	0.0774	2.8223	0.0212
Stationary Wavelet	0.0184	1.7341	0.9840	6.8419	0.0300	0.7383	0.0013

Table 2: Spectral quality metrics for Fig. 2.

	CC	ERGAS	Qave	RASE	RMSE	SAM	SID
Reference Values	0	0	1	0	0	0	0
Original IHS	0.0433	2.7883	0.9006	10.7874	0.0320	0.8262	0.0017
Edge Adaptive IHS	0.0218	2.4429	0.9256	9.4623	0.0280	0.5585	0.0014
Image Adaptive IHS	0.0144	2.1205	0.9466	8.2036	0.0243	0.5621	0.0006
Adaptive IHS	0.0056	1.9305	0.959	7.4694	0.0221	0.4061	0.0004
PCA	0.3007	2.9509	0.8985	11.9893	0.0355	1.6822	0.0041
Stationary Wavelet	0.0237	1.4905	0.9740	5.8244	0.0173	0.5902	0.0004

Table 3: Spectral quality metrics for Fig. 3.

	CC	ERGAS	Qave	RASE	RMSE	SAM	SID
Reference Values	0	0	1	0	0	0	0
Original IHS	0.0025	1.1433	0.9698	4.5688	0.0263	0.0673	0.0006
Edge Adaptive IHS	0.0018	1.0831	0.9728	4.3274	0.0249	0.0583	0.0005
Image Adaptive IHS	0.0008	1.0815	0.9730	4.3220	0.0249	0.0615	0.0006
Adaptive IHS	0.0008	1.0302	0.9755	4.1169	0.0237	0.0537	0.0005
PCA	0.1044	2.4431	0.7902	9.7709	0.0563	0.4432	0.0037
Stationary Wavelet	0.0044	0.8965	0.9817	3.5823	0.0206	0.4510	0.0014

Table 4: Spectral quality metrics for Fig. 4.

	CC	ERGAS	Qave	RASE	RMSE	SAM	SID
Reference Values	0	0	1	0	0	0	0
Original IHS	0.0209	5.6819	0.6501	21.5700	0.0909	2.2080	0.0148
Edge Adaptive IHS	0.0183	5.3771	0.6757	20.5317	0.0866	2.0158	0.0142
Image Adaptive IHS	0.0282	4.9675	0.7264	18.8583	0.0795	1.9770	0.0171
Adaptive IHS	0.0345	4.7133	0.7475	17.9718	0.0758	1.8134	0.0166
PCA	0.2729	5.4004	0.6006	19.6502	0.0828	3.2349	0.0192
Stationary Wavelet	0.0162	2.0208	0.9571	7.6711	0.0323	1.0061	0.0124

average performance of the method of image fusion in the spectral bands [16]. We also used the root mean squared error (RMSE) and correlation coefficient (CC) to analyze and compare the spectral quality [17]. The CC calculates the spectral distortion by comparing the CC between the original multispectral bands and the bands of the final fused image. RMSE is the root mean square error between the fused image and the multispectral image. Relative dimensionless global error in synthesis (ERGAS) is a normalized version of RMSE designed to calculate the spectral distortion [18].

In Figures 1-4, the IHS and adaptive IHS methods both clearly sharpen the original image and greatly improve the spatial quality. In Figures 1 and 2, the spectral distortion of the standard IHS method is most visible in the blue color of the swimming pool and running track. The adaptive IHS method produces an image whose colors better match the original image. Spectral distortion is also visible in the forest shown in Figure 4. The shadows in the trees are more precise and darker in the adaptive IHS method than in the original.

Next we look at the metrics to evaluate the spectral quality. We want the metrics to correspond to our prediction of the methods. The values in Tables 1-4 correspond to the images in Figures 1-4 respectively. In all tables, the values of the metrics are closer to the optimal value when using the adaptive IHS. The image adaptive and edge adaptive both perform better than the original IHS. Combining the techniques achieves even better results. Note that the values in Tables 1 and 2 show more improvement than Tables 3 and 4. This is because the images corresponding to the last two tables are rural scenes and there are fewer strong edges to sharpen than in an urban or suburban scene. We also show the results for the Stationary Wavelet and PCA methods. The performance of IHS is consistently better than PCA. Comparing to Stationary Wavelet, the metrics are close to IHS. The spectral quality of the wavelet method is usually better, but the trade-off is that the Stationary Wavelet method is much slower to compute and the fused image often has lower visual quality than images produced by the IHS methods.

IV. CONCLUSION

The IHS pan-sharpening method gives good spatial quality and is a commonly used algorithm for its speed and simplicity. To improve its spectral quality we proposed two new techniques: edge adaptive and image adaptive. The merging of these techniques improves the spectral quality of the IHS fused image while maintaining its spatial resolution. Therefore we proposed the adaptive IHS that incorporates both of these techniques, which in turn presents the best spectral quality amongst these methods. The performance evaluation metrics confirmed the competence of the adaptive IHS method.

ACKNOWLEDGMENTS

The authors would like to thank Professor A. Bertozzi for her advice and assistance. This work was supported by the US Department of Defense.

REFERENCES

- [1] T. Tu, S. Su, H. Shyn and P. Huang. "A New Look at IHS-like Image Fusion Methods." *Information Fusion*, Vol. 2. pp. 177-186. 2001.
- [2] V. P. Shah and N. H. Younan. "An Efficient Pan-Sharpening Method via a Combined Adaptive PCA Approach and Contourlets." *IEEE Trans. on Geosc. and Remote Sens.* 46. 2008.
- [3] X. Otazu and M. Gonzalez-Ausciana. "Introduction of Sensor Spectral Response Into Image Fusion Methods: Application to Wavelet-Based Methods." *IEEE Transactions of Geoscience and Remote Sens.* vol. 43, pp. 2376-2385, 2005.
- [4] A. Eshtehari and H. Ebadi. "Image Fusion of Landsat ETM+ and Spot Satellite Images Using IHS, Brovey and PCA." *Toosi University of Technology.* 2008.
- [5] C. Ballester, V. Caselles, L. Igual and J. Verdera. "A Variational Model for P+XS Image Fusion." *International Journal of Computer Vision*, pp.43-58, 2006.
- [6] Y. Zhang. "Understanding Image Fusion." *PCI Geomatics.* 2008.
- [7] M. Choi. "A New Intensity-Hue-Saturation Fusion Approach to Image Fusion with a Tradeoff Parameter." *IEEE Transactions of Geoscience and Remote Sensing.* Vol. 44, No. 6, pp. 1672-1682, Jun. 2006.
- [8] M. Choi, H. Kim, N.I. Cho and H.O. Kim. "An Improved Intensity-Hue-Saturation Method for IKONOS Image Fusion." *International Journal of Remote Sensing.* 2008.
- [9] J. Canny. "A Computational Approach to Edge Detection," *IEEE Trans. Pattern Anal. Mach. Intell.*, vol. PAMI-8, no.6, pp.679-698, Nov. 1986.
- [10] P. Perona and J. Malik. "Scale-space and Edge Detection Using Anisotropic Diffusion," *IEEE Trans. Pattern Anal. Mach. Intell.*, vol. 12, no. 7, pp. 629-639, Jul. 1990.
- [11] H. Aanaes and J. Sveinsson, "Model-based Satellite Image Fusion," *IEEE Trans. Geosci. Remote Sens.* Vol. 46, no. 5,
- [12] A. Goetz, W. Boardman and R. Yunas. "Discrimination Among Semi-Arid Landscape Endmembers Using the Spectral Angle Mapper(SAM) Algorithm." *Proc. Summeries 3rd Annu. JPL Airborne Geosci Workshop.* pp. 147-149. 1992.
- [13] C. Chang. "Spectral Information Divergence for Hyperspectral Image Analysis" *Proc. Geosci. Remote Sens. Symp.* Vol. 1. pp. 509-511, 1999.
- [14] A. Bovik and Z. Wang. "A Universal Image Quality Index." *IEEE Signal Processing Letters.* Vol. 9, No. 3, pp. 81-84, Mar. 2002.
- [15] L. Alparone, B. Aiazzi, S. Baronti, A. Garzelli and P. Nencini. "A Global Quality Measurement of Pan-sharpened Multispectral Imagery." *IEEE Geosci. Remote Sens. Lett.* Vol. 1, No. 4, pp. 313-317, Oct. 2004.
- [16] M. Choi, R. Kim. "Fusion of Multispectral and Panchromatic Satellite Images Using the Curvelet Transforms." *IEEE Geosci. Remote Sens. Lett.* Vol. 2, No. 2, pp. 136-140, Apr. 2005.
- [17] Q. Du, O. Gungor, and J. Shan. "Performance Evaluation for Pan-sharpening Techniques." *Department of Electrical and computer engineering, Mississippi State University.* 24. 2008.
- [18] L. Wald. "Quality of High Resolution Synthesized Images: Is There a Simple Criterion?" *Proc. Int. Conf. Fusion Earth Data.* 2000.